



THE ORIGINAL  
SINCE 2001

# NEWS

# LETTER

**HOMEbox**

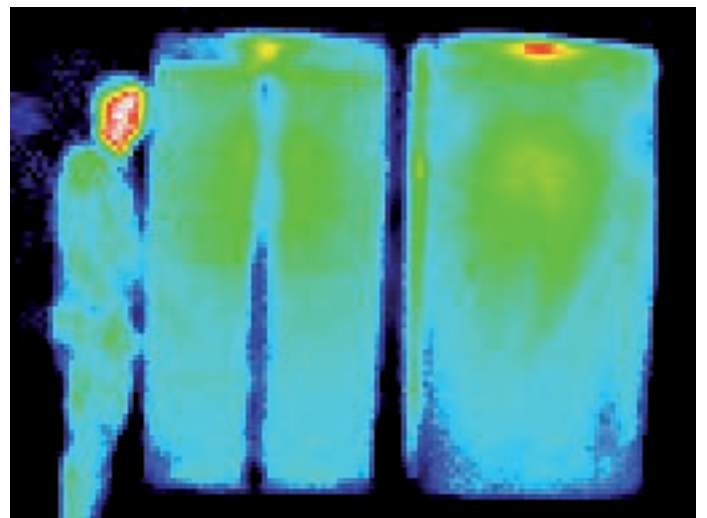
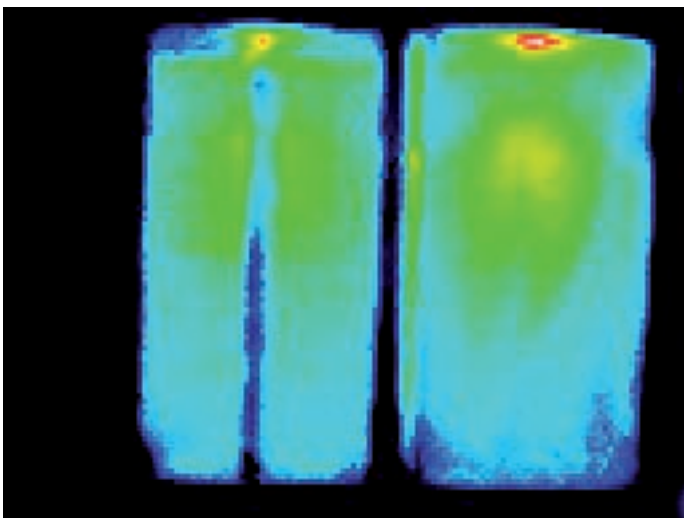
December 2008

## HOMEbox Classic Silver Line v. the competition

In order to guarantee the best conditions for comparison and to be absolutely fair, we took great pains to ensure authenticity and tested our HOMEbox Silver Line boxes immediately next to those of one of our competitors under exactly the same conditions. We used a special infrared camera for testing and placed a standard commercial grow light system (600 Watt HPS system) in both boxes.



Since our intention was to force heat generation in both boxes, we dispensed with the usual cooling system (cool tubes, ventilators, etc.). The images clearly show the different levels in heat emissions of both boxes after 30 minutes of use. The second image at bottom right shows our managing director standing next to the boxes. He acted personally as a reference heat value.



**Result:** The HOMEbox Classic Silver Line does not display any significant heat emission when fitted with a suitable exhaust fan. The only point identified was the exhaust outlet if this is positioned on an outside wall of the building.

Best wishes from your HOMEbox team

[www.homebox.net](http://www.homebox.net)